



# MONTHLY MEMBERSHIP PROGRESS REPORT

District 11 B2

Results as of: 4/30/2015

GMT: THOMAS MATNEY

LOCATION MICHIGAN

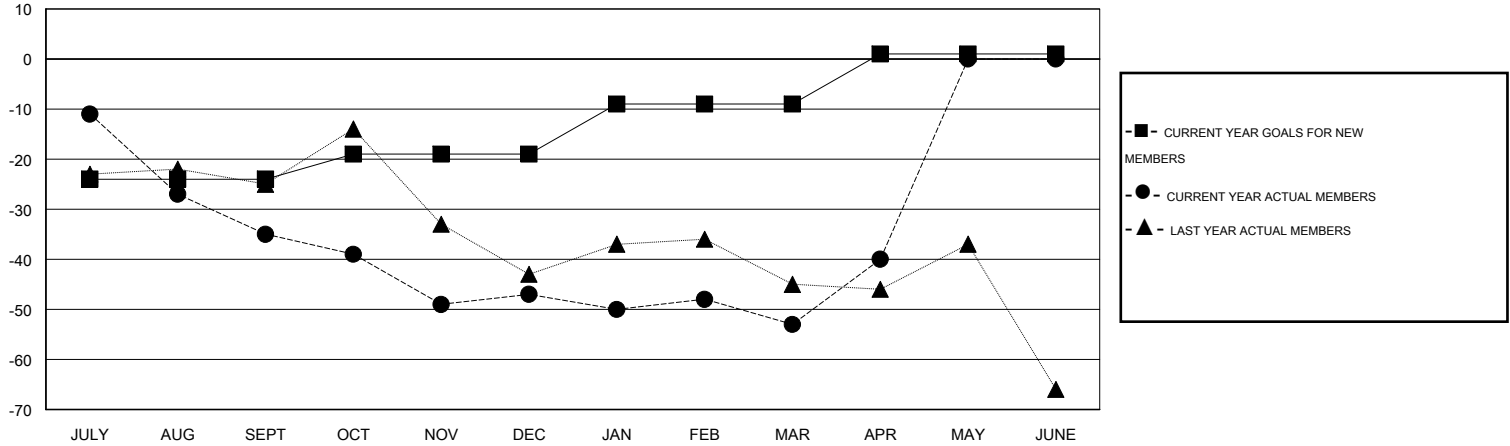
GMT CA 1

Clubs					Members				
RESULTS FOR 2014-2015					RESULTS FOR 2014-2015				
QUARTER	NEW CLUB GOAL	NEW CLUBS	DROPPED CLUBS	NET GAIN/LOSS	QUARTER	NEW MEMBER GOAL	CHARTER AND NEW MEMBERS ADDED	DROPPED MEMBERS	NET GAIN/LOSS
JULY/AUG/SEPT	0	0	1	-1	JULY/AUG/SEPT	-24	9	44	-35
OCT/NOV/DEC	0	0	0	0	OCT/NOV/DEC	5	18	30	-12
JAN/FEB/MAR	0	0	0	0	JAN/FEB/MAR	10	30	36	-6
APR/MAY/JUNE	0	0	0	0	APR/MAY/JUNE	10	24	11	13

GOALS AND ACTUAL NEW CLUBS CUMULATIVE



GOALS AND ACTUAL MEMBERS CUMULATIVE



DROPPED CLUBS: 1	22 CLUBS OF 41 ADDED 1 OR MORE NEW MEMBERS	<b>GENDER DISTRIBUTION</b>
		MALE 735 (71.22%)
		FEMALE 297 (28.78%)
<b>DROPPED MEMBERS</b>	<a href="#">CLICK HERE FOR HEALTH ASSESSMENT DATA</a>	<b>FAMILY UNIT MEMBERS</b> 223
DECEASED 15		HEAD OF HOUSEHOLD 109
CLUB CANCELLED 0		NON-HEAD OF HOUSEHOLD 114
OTHER 106		
<b>TOTAL 121</b>		